

Check the product label for actual catalog number, lot and expiry date.

Cozy™ Prestained Protein Ladder

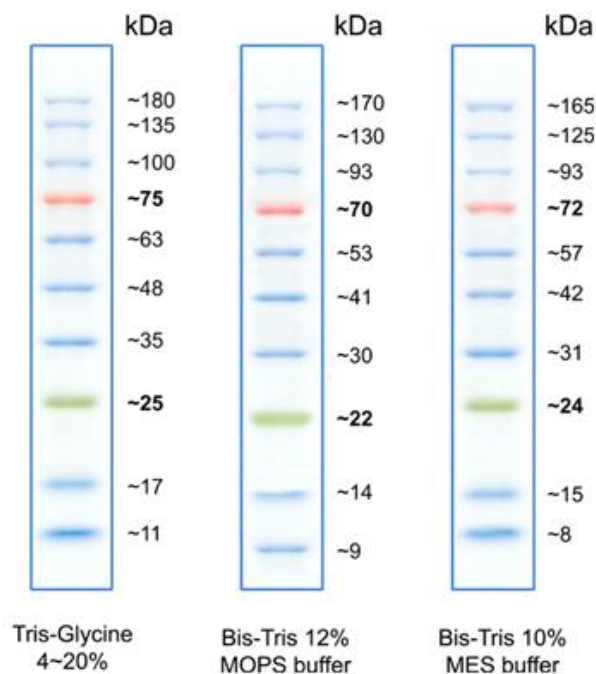
CAT.#	SIZE	COMPONENTS	COMPONENT COMPOSITION
PRL0102	200 appl.	2 x 0.5 ml - Cozy™ Prestained Protein Ladder	Ready to load ladder contains highly purified prestained proteins, supplied denatured in 20 mM Tris-Phosphate (pH 7.5 at 25°C), 2% SDS, 0.2 mM DTT, 3.6 M Urea, 15% (v/v) glycerol).

APPLICATIONS

- Approximate protein molecular weight determination on denaturing gels and Western Blots
- Monitoring of electrophoresis process and transfer efficiency

BENEFITS

- Room-temperature-stable ladders are always ready to be used
- Sharp bands, bright colors



Cozy™ Prestained Protein Ladder

10-180 kDa Range
 25 & 75 kDa References
 10 Bands
 0.2-0.4 µg/µl concentration of each protein
 Ready-to-use

PROTOCOL

Load: 3- 5 µl/ gel well for electrophoresis
 Load: 2- 3 µl/ gel well for Western transfers

STORE

Room temp., short term (2 weeks)
 +4°C, 3 months
 -20°C, 12 months

The storage recommendations are just guidelines, the expiry date shall be followed.

Note:

The picture shows just guidelines for approximate protein MW estimation. The apparent MW of each protein was determined by calibrating it against unstained protein of same size. For more precise sizing, such calibration shall be done exactly at conditions used.

IN VITRO RESEARCH USE ONLY

ORDERING

T: +49 7250 33 13 401
 F: +49 7250 33 11 413
order@highQu.com
www.highQu.com

SALES

T: +49 7250 33 13 401
 F: +49 7250 33 11 413
sales@highQu.com

TECHNICAL SUPPORT

T: +49 7250 33 13 401
 F: +49 7250 33 11 413
tech-support@highQu.com